

RESOLUTION NO. 05-104

**RESOLUTION EXPANDING RURAL SPECIAL
IMPROVEMENT MAINTENANCE DISTRICT #605M
(MCINTOSH SUBDIVISION)**

WHEREAS, the Owners of lots 1, 2, 4, 5, and 6 block 1, of McIntosh Subdivision Fifth Filing have requested to be included in RSID 605M and have requested the Board of County Commissioners to expand the boundaries of RSID 605M; and

WHEREAS, the proposed boundaries of the expanded district are described as lots 1, 2, 4, 5, and 6 block 1 McIntosh Subdivision 5th Filing; lots 1 through 5 block 1, lots 1 through 4 block 2, lots 1 through 4 block 3, lots 1 through 5 block 4, lots 1 through 14 block 5, and lots 1 through 12 block 6 of McIntosh Subdivision, Yellowstone County, Montana, (Exhibit A) and more particularly shown in Exhibits B and C; and

WHEREAS, pursuant to §7-12-2161(4), MCA, the Commissioners have the power of changing, by resolution, the boundaries of any maintenance district not more than once a year; and

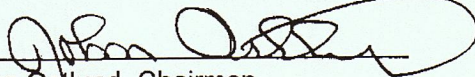
WHEREAS the boundaries of RSID 605M have not been changed within the last year.

NOW, THEREFORE, BE IT RESOLVED by the Board of County Commissioners of Yellowstone County, Montana, deeming the public interest or convenience require, and having received an adequate Petition for the expansion of the Rural Special Improvement Maintenance District, intends to expand the following described Rural Special Improvement Maintenance District:

- 1. DESCRIPTION OF IMPROVEMENTS, DESCRIPTION OF MAINTENANCE, METHOD OF ASSESSMENT AND ESTIMATED COSTS.** Assessments collected on behalf of this district shall be used for the maintenance, preservation, and repair of the streets located within the boundaries of this district. All of the costs of the district shall be assessed equally on a per lot method (Exhibit D) for existing and future lots. Estimated costs are shown in Exhibit E, but costs shown are not exclusive of other eligible street expenditures.

PASSED AND ADOPTED by the Board of County Commissioners of Yellowstone
County, Montana, this 11th day of October, 2005.

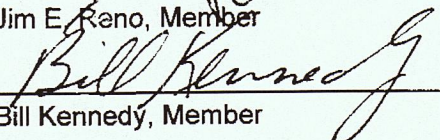
BOARD OF COUNTY COMMISSIONERS
YELLOWSTONE COUNTY, MONTANA



John Ostlund, Chairman

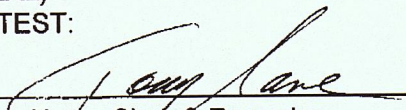


Jim E. Reno, Member



Bill Kennedy, Member

(SEAL)
ATTEST:



Tony Nave, Clerk & Recorder
Yellowstone County, Montana

LEGAL DESCRIPTIONS

Lots 1,2,4,5,and 6 Block 1 McIntosh Subdivision, Fifth filing
Lots 1-5 Block 1 McIntosh Subdivision
Lots 1-4 Block 2 McIntosh Subdivision
Lots 1-4 Block 3 McIntosh Subdivision
Lots 1-5 Block 4 McIntosh Subdivision
Lots 1-14 Block 5 McIntosh Subdivision
Lots 1-12 Block 6 McIntosh Subdivision

EXHIBIT B
ROAD BOUNDARY FOR

McINTOSH SUBDIVISION, FIFTH FILING

BEING TRACT 1, CERTIFICATE OF SURVEY No.1216
SITUATED IN THE E.1/2 S.E.1/4 SECTION 19 & W.1/2 S.W.1/4 SECTION 20, T.1N., R.27E., P.M.M.
YELLOWSTONE COUNTY, MONTANA

PREPARED FOR: JAMES L. McINTOSH
PREPARED BY: ENGINEERING, INC.
SCALE: NTS

JUNE, 2005
BILLINGS, MONTANA



RSID BOUNDARY

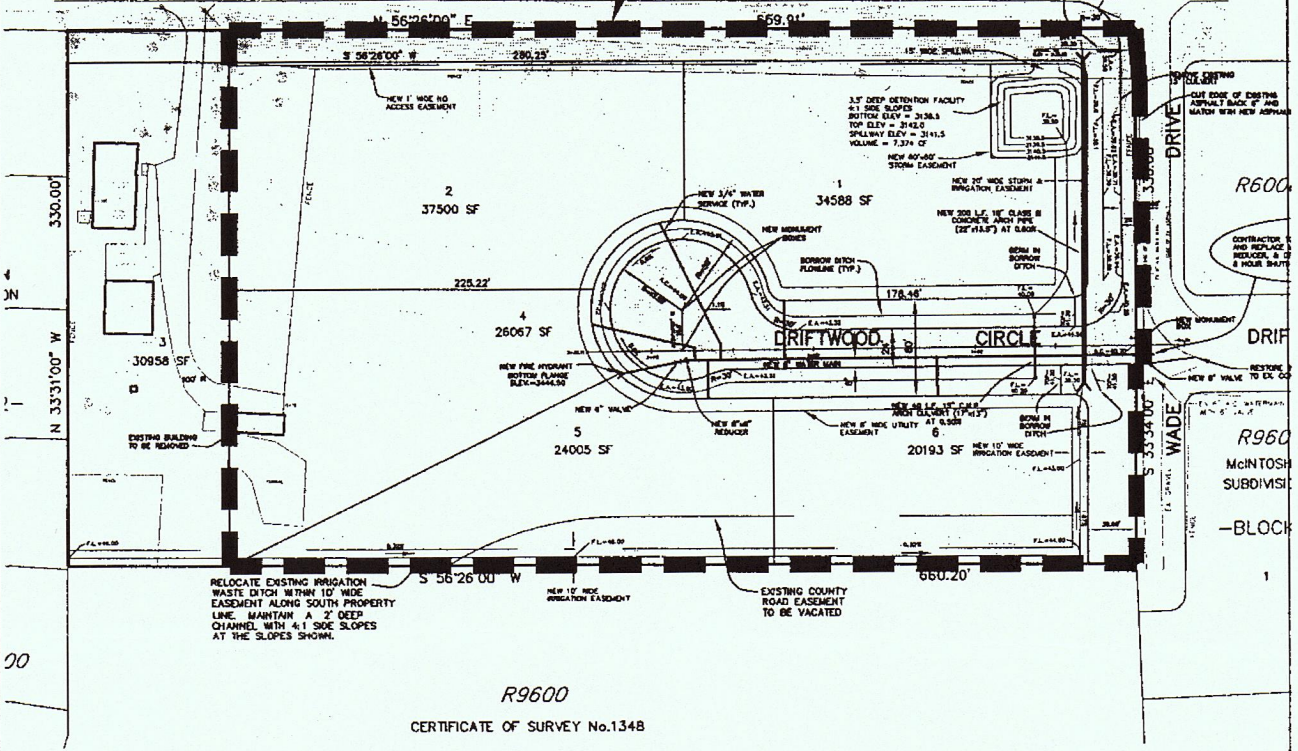
E.L.C.

CERTIFICATE OF SURVEY No.1278
TRACT 1

E.H.C.
UNPLATTED

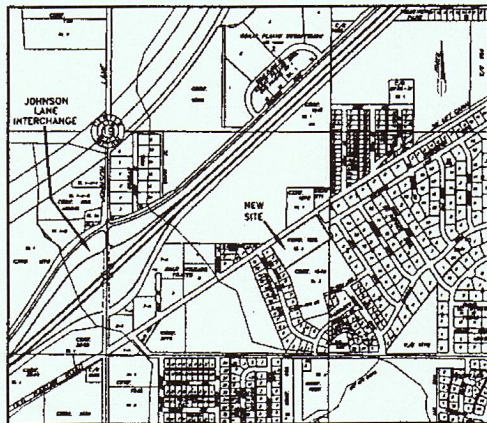
CERTIFICATE OF SURVEY No.1278

OLD HARDIN ROAD



R9600

CERTIFICATE OF SURVEY No.1348



VICINITY MAP
NOT TO SCALE



TYPICAL PAVED ROAD SECTION
NOT TO SCALE

EXHIBIT C

This document is intended for informational purposes only and is not guaranteed to be accurate nor current.
This document may not be reproduced in any way without advance permission from the Yellowstone County GIS Management Committee.
Date: 7/19/2005 8:50:57 AM
YELLOWSTONE COUNTY GIS
C:\work\rsid605m.mxd



TTED

CS 1278
TR. 1

CS 671

CS 1216
TR. 1

CS 1348
TR. 3

CS 1348
TR 3

CS 1573

TRA

PARK

TR B

TR 2

NE

